



南京埃帕克斯光学有限公司
NANJING APEX OPTICS CO.,LTD



光驭未来科技 智见无限可能

Light-Driven Future Technology
Intelligence Unlocks Infinite Possibilities



企业使命

Corporate Vision

- 以创新的光学技术为驱动
- 致力于推动先进制造的产业发展

Driven by innovative optical technologies, we are committed to advancing the development of advanced manufacturing industries.



高品质

High-Quality

高精度

High-Precise

高可靠性

High-Reliable

Core Values

公司价值观

01

客户至上

Clients First

始终以客户需求为中心，将客户满意度作为衡量工作的首要标准

Center on customer needs and make customer satisfaction the top work criterion.

02

创新进取

Relentless Refinement

积极探索新技术、新工艺、新产品，不断追求卓越，为行业发展注入新动力

Actively explore new tech, processes, and products, pursue excellence, and fuel industry development.

03

精益求精

Bold Innovation

秉持严谨细致的工作态度，对产品质量严格把控，用品质赢得客户信赖

Be rigorous in work, strictly control product quality, and win customer trust with quality.

04

协作共赢

Collective Triumph

与合作伙伴共同发展，实现资源共享、优势互补，携手共创美好未来

Grow with partners, share resources, complement each other, and create a better future together.

About Us

公司介绍

南京埃帕克斯光学有限公司成立于2016年，是国家科技企业和省高新技术企业，主要生产各种高端滤光片、窗口片、反射镜、分光镜、棱镜。公司位于江苏省句容市第一智能制造产业园，拥有超2000平方米的厂房。凭借毗邻机场及高铁枢纽的优越地理位置，为全球客户提供高效光学元件定制服务。

南京埃帕克斯光学有限公司自成立以来，依托深厚的技术积淀和强大的生产实力，深度融入全球先进制造业。以高精冷加工技术与先进镀膜工艺为核心竞争力，专注为全球客户提供高品质、高精度、高可靠性的光学产品定制解决方案。

公司构建了覆盖研发到交付的全产业链智能控制体系，通过整合超精密面型精度控制技术与先进光学加工工艺，为激光、医疗、智能数码、投影显示、航空航天、红外成像等高端精密仪器和设备，目前已为国内、外百余家科研院所、实验室、高校和公司供货高质量光学元件。

Established in 2016, Nanjing Epex Optics Co., Ltd., a national science and technology enterprise and provincial high - tech firm, produces high - end optical filters, windows, mirrors, etc. Based in Jurong' s No.1 Intelligent Manufacturing Industrial Park with a 2,000+ sqm factory, its prime location near airport and railway hubs enables efficient global custom services.

Leveraging deep technical expertise and strong production, the company integrates into global advanced manufacturing. Its core strengths in high - precision cold processing and coating technology ensure customized, high - quality optical solutions.

With an intelligent end - to - end control system, it serves laser, medical, aerospace and other high - end sectors. So far, it has supplied over 100 domestic and international institutions, universities and companies.



Core Team

团队优势

南京埃帕克斯光学拥有15年以上行业经验的光学专家领衔，汇聚了光学设计、材料加工、高精密镀膜等领域的 200余位精英人才。构建起从材料加工、光学方案设计到镀膜交付的一站式服务体系。

Nanjing Epex Optics , Led by 15+ years experienced optical experts, Nanjing Aisiteoptics has gathered 200+ elites in optical design, material processing and high-precision coating. We offer one-stop services from material processing, optical design to coating delivery.



15年以上光学加工行业经验

15+ years experienced optical experts



200余位跨领域精英

Over 200 cross - disciplinary elites



2000平的生产加工车间

2,000 square meters of production and processing workshop

凝心聚力

Pool wisdom and efforts



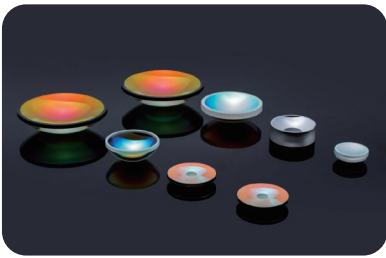
质量取胜

Triumph through quality



Core Advantages

加工优势

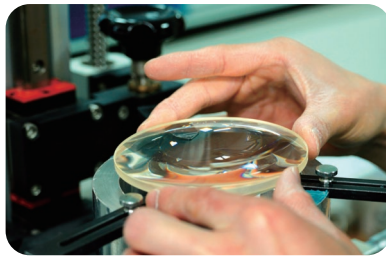


加工产品丰富

Broad Product Line

加工产品涵盖滤光片、窗口片、反射镜、球面 / 非球面、棱镜、柱面镜等，一站式满足客户不同场景需求。

Filters, windows, mirrors, lenses, prisms. One - stop solution.

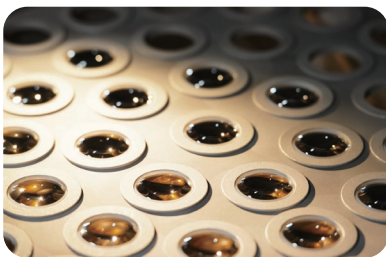


多元材料适配

Versatile Materials

构建光学玻璃、熔融石英、特种树脂及蓝宝石晶体等材料矩阵，精准适配消费电子、生物医疗、工业检测等场景的严苛需求。

Optical glass, fused silica, resins, sapphire. Ideal for electronics, medical, industrial use.

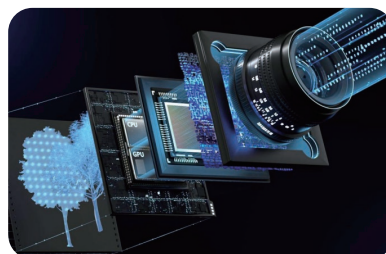


先进镀膜工艺

High - precision coating

掌握高精冷加工技术与先进镀膜工艺，持续技术创新与工艺优化，保持产品性能行业领先，满足高端需求。

High - precision cold work and coating. Constant innovation for quality.



卓越光学性能

Optical Excellence

突破纳米级面型精度管控，实现紫外至远红外全光谱覆盖，透光率 $\geq 99.5\%$ ，激光损伤阈值 $> 25\text{J}/\text{cm}^2$ (@1064nm)，确保光学性能极致稳定。

Nanometer - level accuracy. Full UV - far - infrared spectrum. Transmittance $\geq 99.5\%$, laser threshold $> 25\text{J}/\text{cm}^2$ (@1064nm). Stable performance.

test equipment

检测设备

完善的检测体系

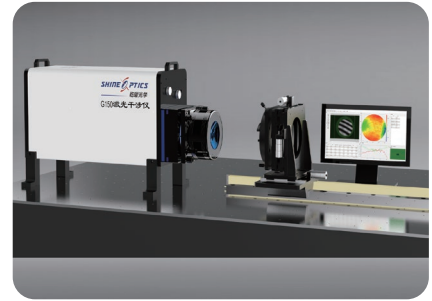
A perfect testing system

配备超30台检测设备，涵盖 ZYGO 轮廓仪、干涉仪、影像仪、进口分光光度计等先进精密仪器，实现从原材料检验至成品验收的全流程质量把控。

A complete quality inspection system and 20+ advanced testing instruments ensure full - process quality control from raw materials to finished products.



ZYGO三维光学轮廓仪



G100激光干涉仪



ZYGO激光干涉仪



分光光度计 UV-3600



影像仪



MPC-3100分光光度计

镀膜加工车间 Coating workshop

拥有5台行业领先的镀膜设备，配备超声波清洗机，以及定制化工装夹具，可灵活适配各类复杂形状的光学元件，构建起标准化、高效率的镀膜生产体系。工艺细节全方位保障产品品质。

Equipped with 5 industry - leading coating machines, an ultrasonic cleaning machine, and customized fixtures that can flexibly adapt to various complex - shaped optical components, we have established a standardized and highly efficient coating production system. Every detail of the process is meticulously controlled to ensure product quality.

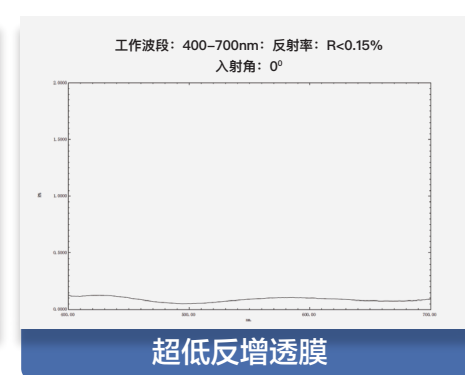
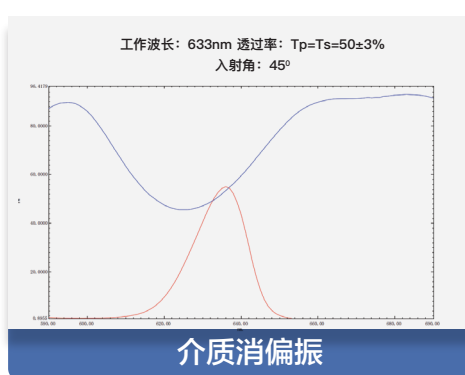
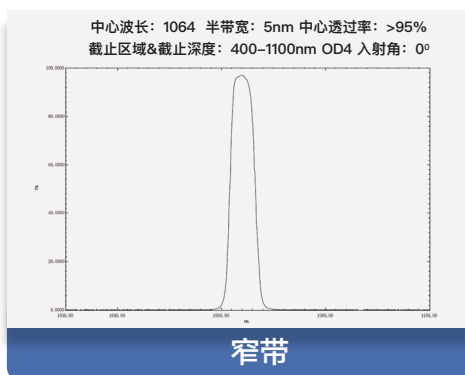
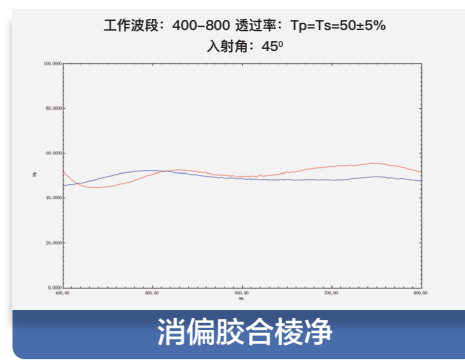
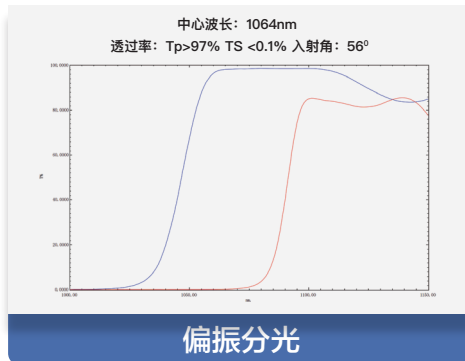
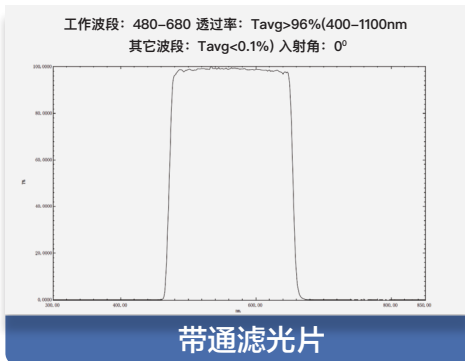


依托完善工艺控制体系与先进生产设备，我们可生产全品类镀膜产品，包含高反膜、长波通膜、短波通膜、带通膜、抗激光膜、防水膜、金属膜、导电膜等。其中超低反射增透膜，可将表面反射率有效控制到行业领先水平，显著提升光学元件透光效率。

With a robust process control system and advanced production equipment, we can manufacture a full range of coating products, including high-reflective coatings, long-pass filters, short-pass filters, band-pass filters, laser-resistant coatings, waterproof coatings, metal coatings, and conductive coatings. Among them, our ultra-low reflection anti-reflective coating can effectively control surface reflectivity at industry-leading levels, significantly improving the light transmission efficiency of optical components.

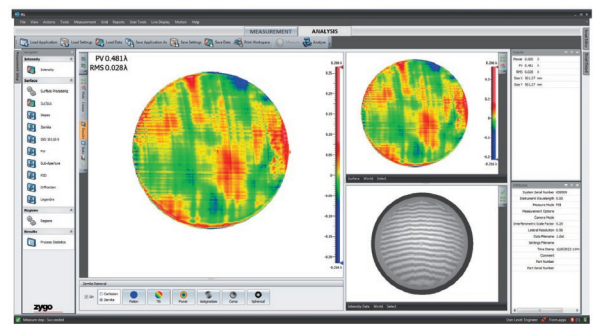
镀膜后实测光谱

Measured spectrum after coating



镀膜前 Before coating

zygo



超低反镀膜前后面型对比

Comparison of surface shapes before and after coating

一、面型稳定性

Surface Profile Stability

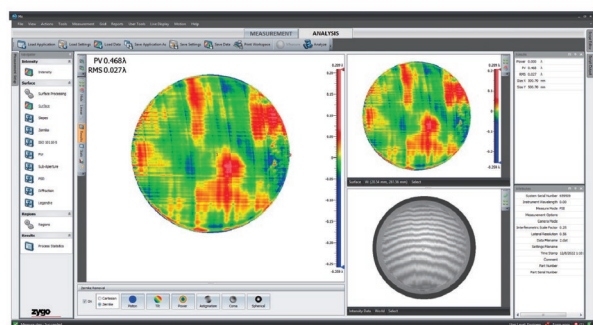
大尺寸非球面反射镜 (D580*100)

镀膜前: $PV\ 0.468\ \lambda$ 、 $RMS\ 0.027\ \lambda$

镀膜后: $PV\ 0.481\ \lambda$ 、 $RMS\ 0.028\ \lambda$

镀膜后 Before coating

zygo



二、高损伤阈值

High Damage Threshold

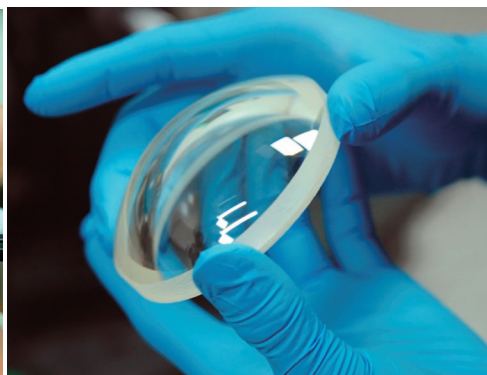
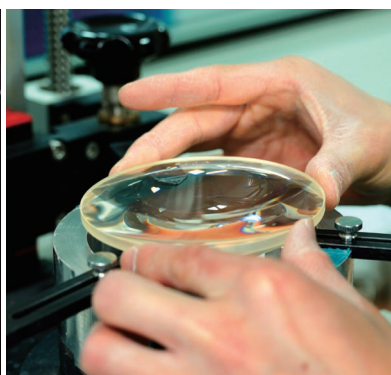
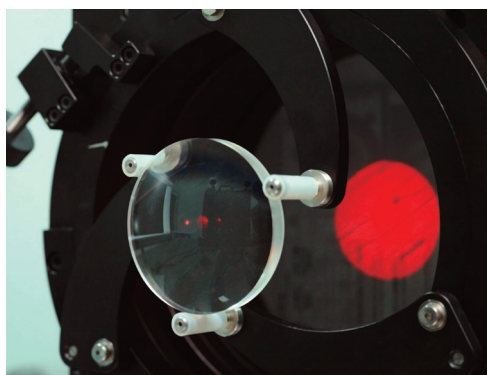
经上海光机所100点测试, 在1064nm波长、10ns脉冲宽度、20Hz重复频率下, 损伤阈值达 $31\text{J}/\text{cm}^2$, 可满足多数高损伤阈值产品需求, 适用于激光等高强度光学场景。

Tested at 100 points by Shanghai Institute of Optics and Fine Mechanics, the damage threshold hits $31\text{J}/\text{cm}^2$ under 1064nm wavelength, 10ns pulse width and 20Hz repetition rate, meeting most high-threshold product demands and fitting high-intensity optical scenarios like lasers.

球面加工车间 Spherical Lens workshop

球面加工车间配备15台高精度球面镜研磨抛光设备与5台先进光学磨边机，实现从粗加工到精细抛光的全流程高效作业。通过严格的质量管控体系与成熟的加工标准，能够精准生产各类高精度球面光学元件。

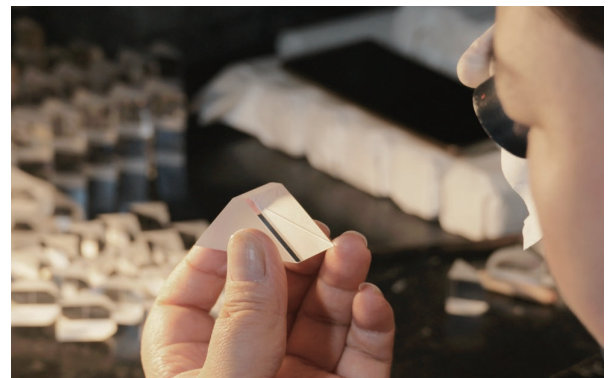
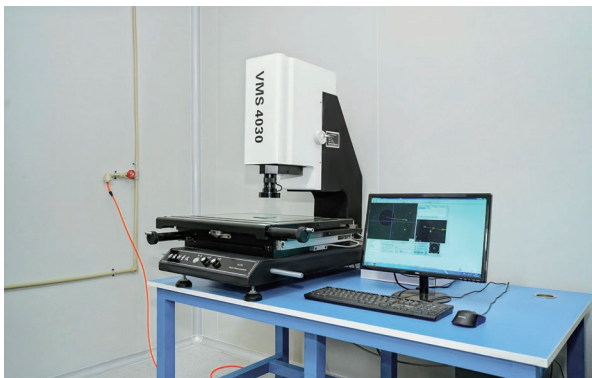
Nanjing Aisiteoptics is equipped with 15 high-precision spherical mirror grinding and polishing devices and 5 advanced optical edging machines, enabling efficient full-process operations from rough machining to fine polishing. With a strict quality control system and mature processing standards, it can accurately produce various high-precision spherical optical components.



棱镜加工车间 Prism workshop

棱镜加工车间配备8台高性能棱镜加工设备，由多名具备丰富行业经验的高级技工精准操控，可根据客户需求定制各类高精度棱镜元件，满足多样化光学应用场景的严苛要求。

The prism processing workshop is equipped with 8 high-performance prism processing equipment units, operated by multiple senior technicians with extensive industry experience. We can customize various high-precision prism components to meet the strict requirements of diverse optical application scenarios.



柱面加工车间 Cylindrical workshop

柱面镜生产车间配备10台高性能研抛仪，搭载微米级检测系统，可完成复杂工艺。车间团队由 15 年以上经验的工程师和技工组成，精准把控生产工序。

The production workshop for cylindrical mirrors is equipped with 10 high-performance grinding and polishing machines, which are equipped with a micron-level detection system and can complete complex processes. The workshop team is composed of engineers and technicians with more than 15 years of experience, who accurately control the production processes.



车间遵循 ISO 标准，构建全流程质量管控体系，从原料检验到成品检测严格把关。凭借 $\pm 0.1\mu\text{m}$ 面形精度和优于 $\lambda/10$ 的光洁度，为激光扫描、显微成像等高端领域，稳定供应高精度柱面元件。

The workshop adheres to ISO standards and has established a full - process quality control system, strictly overseeing every step from raw material inspection to finished product testing. With a surface form accuracy of $\pm 0.1\mu\text{m}$ and a surface finish superior to $\lambda/10$, it stably supplies high - precision cylindrical components for high - end fields such as laser scanning and microscopic imaging.





Ink-Coating

涂墨加工

我司涂墨服务具备显著优势：

- 采用微米级定位的智能设备，可实现自动喷涂与精准控温固化，保障墨层均匀、边缘齐整，有效降低光学损耗；
- 资深技术团队熟稔各类光学材料特性，精准调控工艺参数，杜绝墨滴飞溅、气泡等问题，打造光洁如镜的涂墨表面；
- 同时运用环保高性能墨料，结合独特预处理与固化流程，使墨层兼具强附着力、耐磨、抗腐、耐高温等特性，确保光学元件在复杂环境下性能稳定、使用寿命长久。

Our ink-coating services stand out with key advantages:

Micron-level precision equipment for automatic spraying and temperature-controlled curing ensures uniform ink layers, neat edges, and reduced optical loss.

Senior tech teams master optical materials, adjusting parameters to prevent splashing/bubbles for mirror-smooth surfaces.

Eco-friendly high-performance inks with unique processes deliver strong adhesion, wear/corrosion/high-temperature resistance, ensuring stable component performance and long life in tough environments.



设备精尖

Cutting-edge
Equipment



技术精湛

Exquisite
Technology



工艺领先

Leading
Process

平片系列 Plano-Optics

以窗口片、滤光片、平面分束镜及反射镜为核心组件，尺寸覆盖直径 / 边长 1mm – 600mm，凭借创新镀膜技术为未来光学系统赋能。

覆盖激光加工、生物医疗、航空航天、VR/AR、天文观测、安防监控、智能数码、投影显示、红外成像等多个领域。

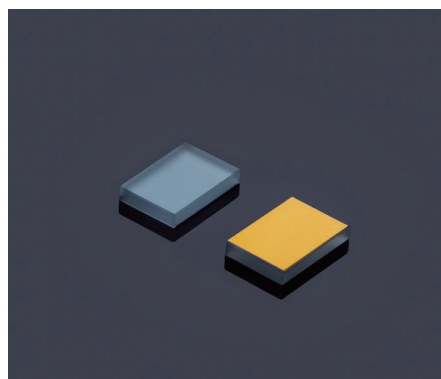
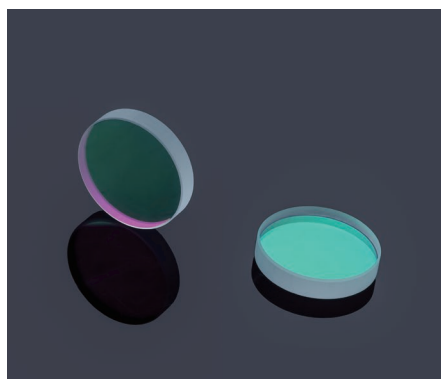
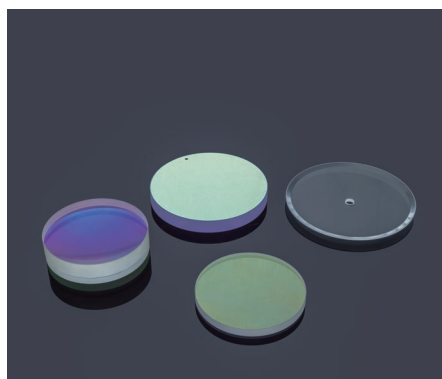
With window wafers, optical filters, planar beam splitters and mirrors as core components, the size covers diameter/side length from 1mm to 600mm, and empowers future optical systems with innovative coating technologies.

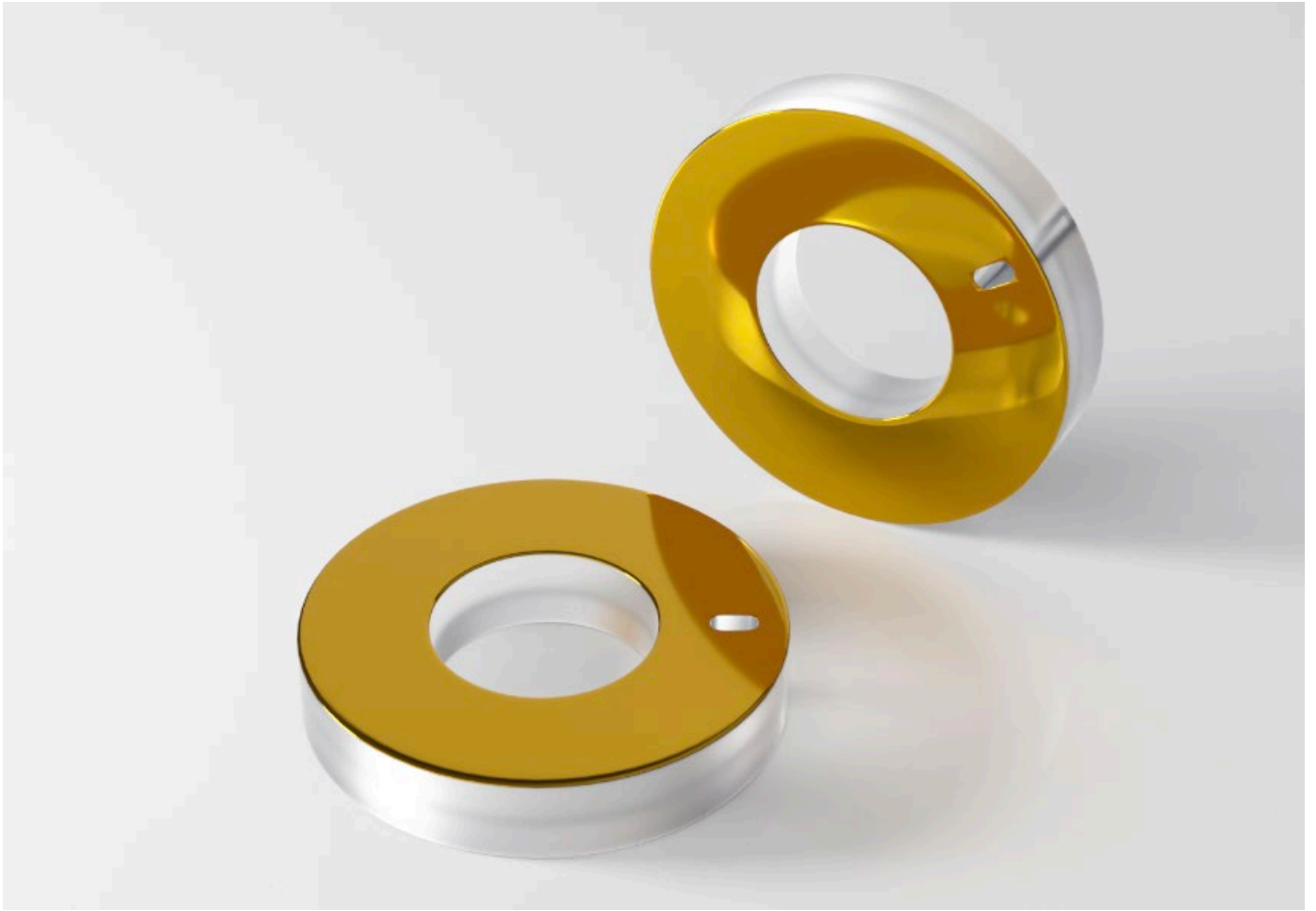
It covers many fields such as laser processing, biomedical, aerospace, VR/AR, astronomical observation, security monitoring, smart digital, projection display, infrared imaging and so on.

技术参数

Common Specifications

外径/Diameter	2-600mm
形状/Shape	圆形，方形，长方形，及各种定制形状/Regular or Customized shapes
材料/Substrate Material	玻璃，石英，红外材料，蓝宝石等/Glass, Quartz, Infrared material, Sapphire
平面面型/Surface Flatness	$3\lambda - \lambda/25$ @633nm
平行/Parallelism	3arcmin – 10arcsec
表面质量/Surface Quality	60/40 – 10/5
厚度公差/Thickness Tolerance	0.20 – 0.01mm
尺寸公差/Diameter Tolerance	0.20 – 0.01mm
通光口径/Clear Aperture	90% – 100%
镀膜/Coating	增透，分束，滤光，反射，防水，防雾，导电膜 AR, BBAR, As, AF, ITO; Splitter, Filter, Reflector





透镜系列 Spherical-Optics

涵盖异形透镜、平凸、平凹、双凸、双凹、凹凸透镜六大经典结构，尺寸覆盖直径 1mm – 500mm，适配从紫外到红外的全光谱需求，为不同领域的光学应用提供精准的光学解决方案。

应用场景：投影设备、成像设备，数码相机、车载系统、激光及光学仪器等。

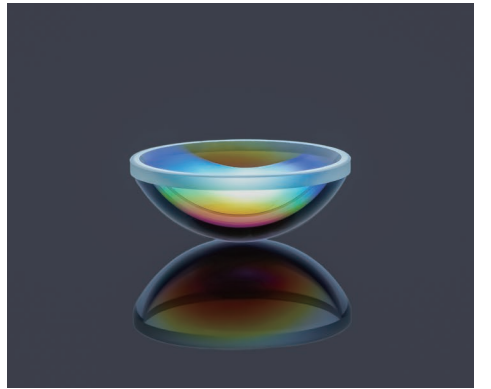
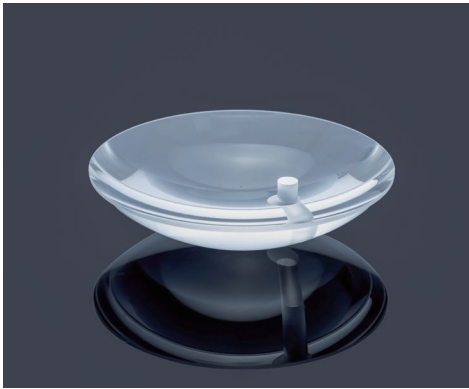
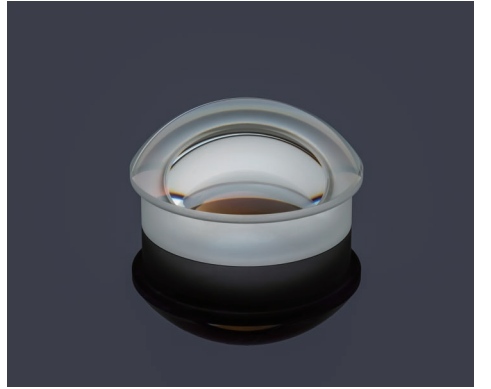
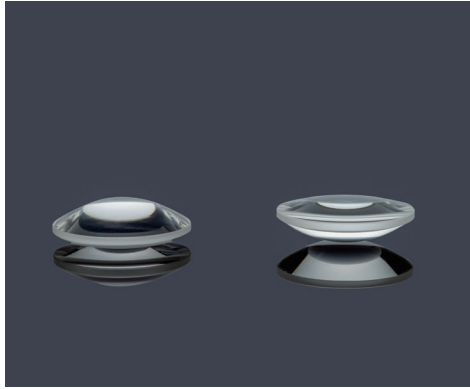
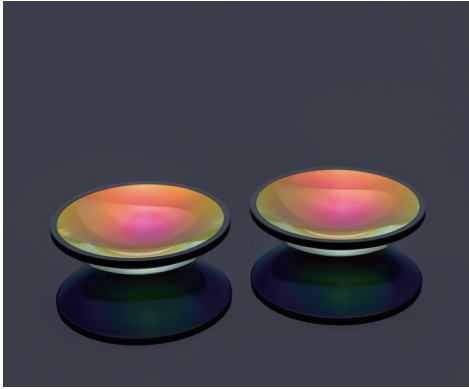
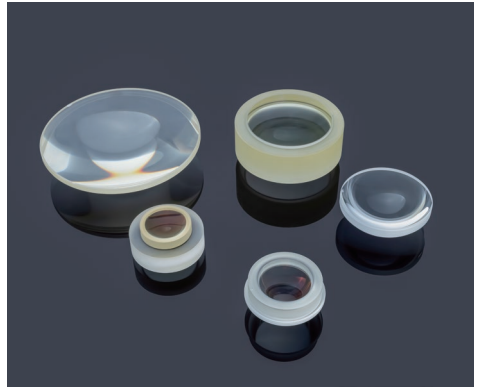
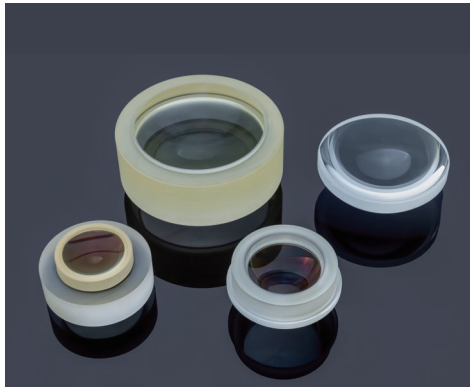
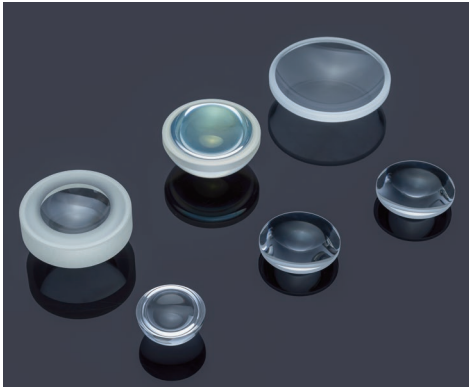
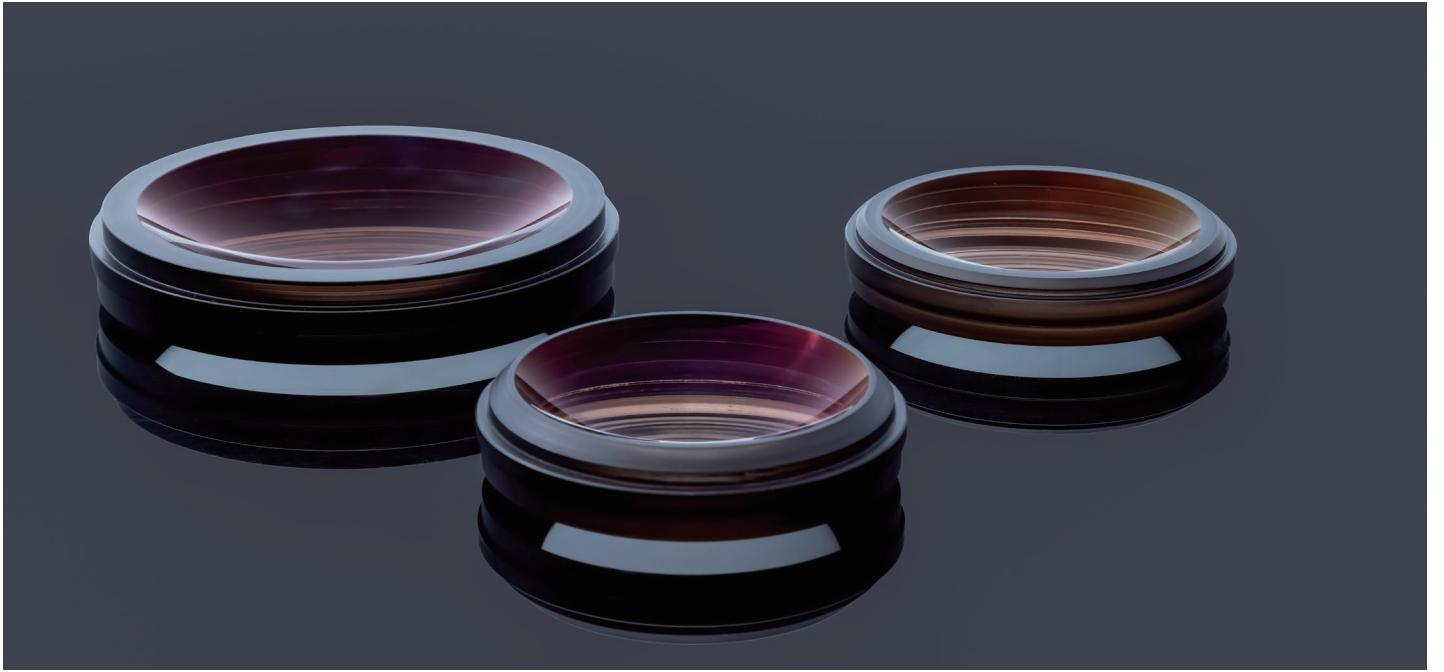
It covers six classic structures, including irregular lenses, plano-convex, plano-concave, double-convex, double-concave, and meniscus lenses, with diameters ranging from 1mm to 500mm. It is suitable for the full spectrum requirements from ultraviolet to infrared, providing precise optical solutions for optical applications in various fields.

Application scenarios: projection equipment, imaging devices, digital cameras, vehicle-mounted systems, lasers, and optical instruments, etc.

技术参数

Common Specifications

外径/Diameter	3–350mm
形状/Shape	常规形状，球罩，切边，胶合/Regular shapes, Dome, trimmed, cemented
材料/Substrate Material	玻璃，熔石英，蓝宝石，氟化钙等/Glass, FS, Sapphire, CaF2
曲率范围/Raduis	2mm–∞
平面面型/Surface Flatness (Plano)	$3\lambda - \lambda/20$ @633nm
球面面型N/Spherical Surface Power	$3\lambda - \lambda/4$ @633nm
球面不规则/Surface Irregularity	$2\lambda - \lambda/10$ @633nm
表面质量/Surface Quality	60/40 – 10/5
厚度公差/Thickness Tolerance	0.20 – 0.01mm
尺寸公差/Thickness Tolerance	0.20 – 0.01mm
偏心/Diameter Tolerance	3arcmin – 20arcsec
通光口径/Clear Aperture	90% – 100%
镀膜/Coating	增透，分束，滤光，反射，防水，防雾，导电膜 AR, BBAR, As, AF, ITO; Splitter, Filter, Reflector



柱面镜系列 Cylindrical-Optics

提供轮胎镜、圆锥、平凹、双凸、双凹、弯月、胶合柱面镜全品类设计，尺寸覆盖直径5mm-200mm，曲率半径 0.5mm - 10000mm，支持非对称曲面定制，能够精准调控单向光束聚焦与扩束，满足特殊光学系统的需求。

应用领域：激光雷达，激光仪器、激光条码扫描仪、光通信、证件扫描仪、激光打印机、数码相机、光学分析仪、投影仪、雷达等。

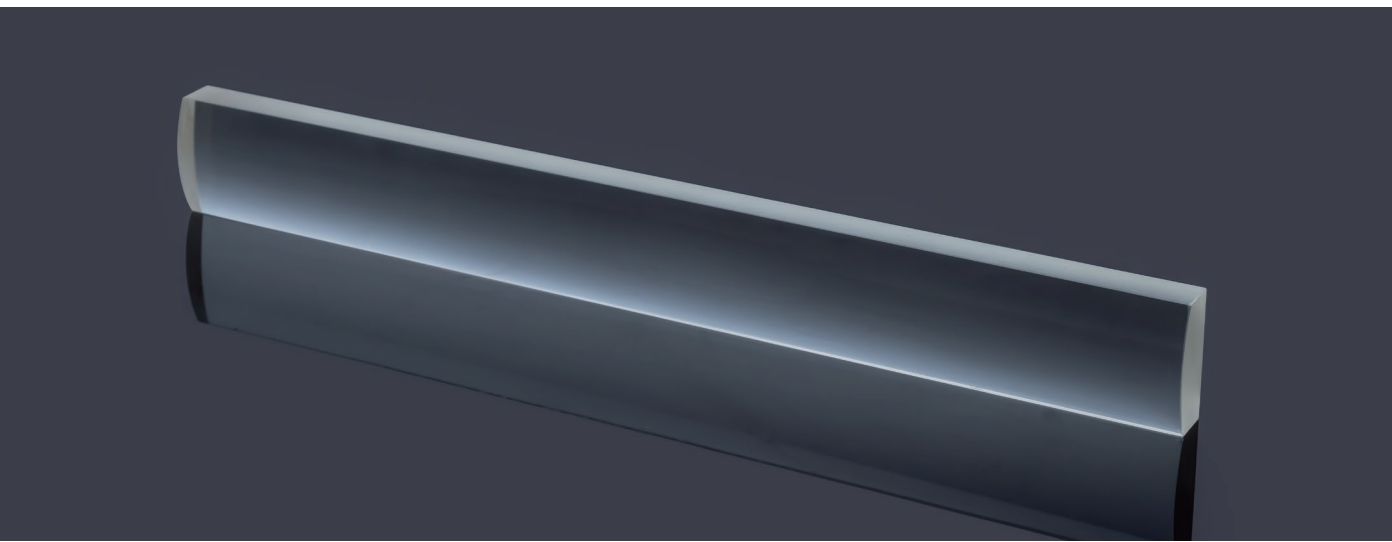
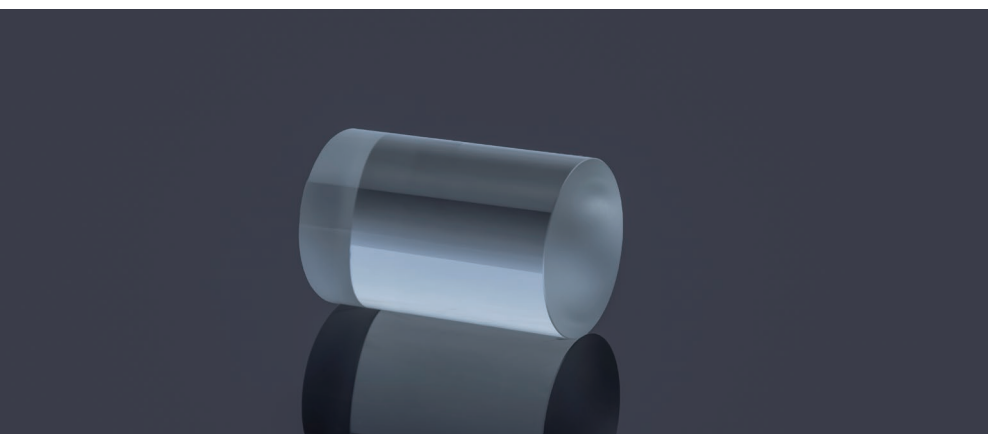
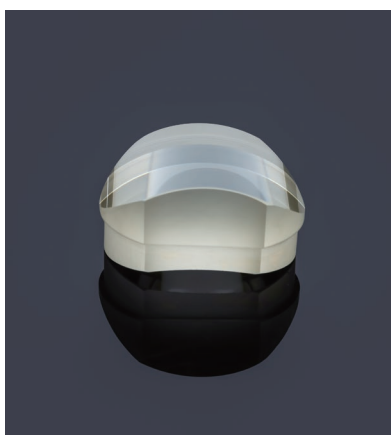
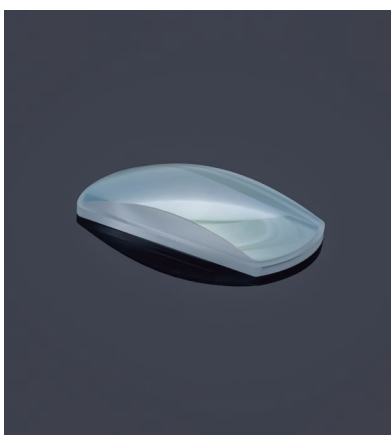
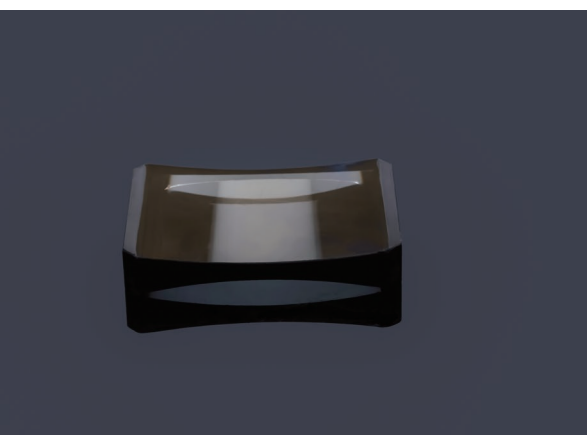
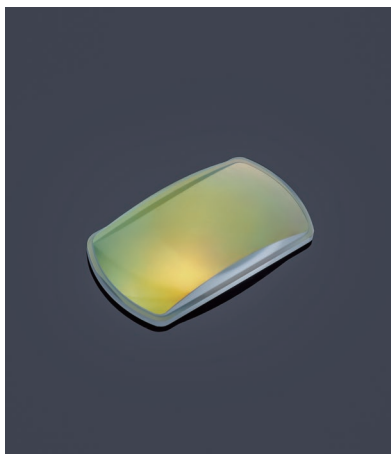
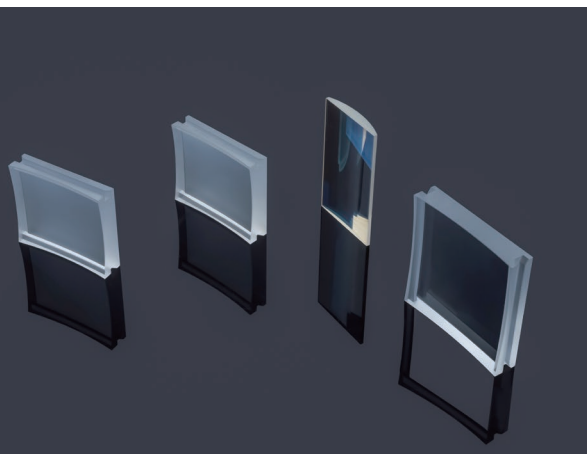
We provide full-category designs for tire mirrors, cones, plano-concave lenses, double-convex lenses, double-concave lenses, meniscus lenses, and cemented cylindrical lenses. The size ranges from 5mm to 200mm in diameter, and the radius of curvature spans from 0.5mm to 10000mm. Customization of asymmetric surfaces is supported, enabling precise control over unidirectional beam focusing and expansion to meet the requirements of specialized optical systems.

Application areas: LiDAR, laser instruments, laser barcode scanners, optical communication, document scanners, laser printers, digital cameras, optical analyzers, projectors, radar, etc.

技术参数

Common Specifications

外径/Diameter	5-250mm
形状/Shape	常规长方形，圆形，胶合/Regular shapes, cemented
材料/Substrate Material	玻璃，熔石英，氟化钙等/Glass, FS, CaF2
曲率范围/Raduis	4mm-∞
平面Power/Surface Flatness (Plano)	$3\lambda - \lambda/10$ @633nm
柱面Power-H/Cylindrical Surface Power-H	$3\lambda - \lambda/4$ @633nm
柱面不规则H/Irregularity-H	$2\lambda - \lambda/8$ @633nm
柱面Power-L/Cylindrical Surface Power-L	$3\lambda - \lambda/8$ @633nm
柱面不规则L/Irregularity-L	$\lambda/8$ cm
表面质量/Surface Quality	20-80
厚度公差/Thickness Tolerance	0.20 - 0.01mm
尺寸公差/Diameter Tolerance	0.20 - 0.01mm
偏心/Centration	5arcmin - 1arcmin
通光口径/Clear Aperture	90% - 100%
镀膜/Coating	增透，反射，防水，防雾/AR, HR, AS, AF



棱镜系列 Prism-Optics

提供直角棱镜、五角棱镜、TIR棱镜、斜方棱镜、角锥棱镜等全品类设计，尺寸覆盖边长5mm-300mm，支持非标角度与复合棱镜定制，可实现光路转向、分光、偏振等核心功能，在光学仪器、激光设备等领域发挥重要作用。

应用领域：投影仪、投影机、潜望镜、望远镜、显微镜、指纹仪、水准仪、太阳能转换器、测量仪器、光学设备、医疗仪器、激光治疗设备等领域。

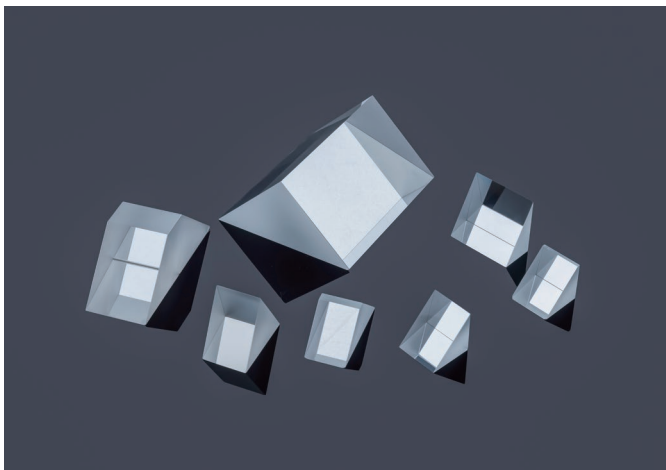
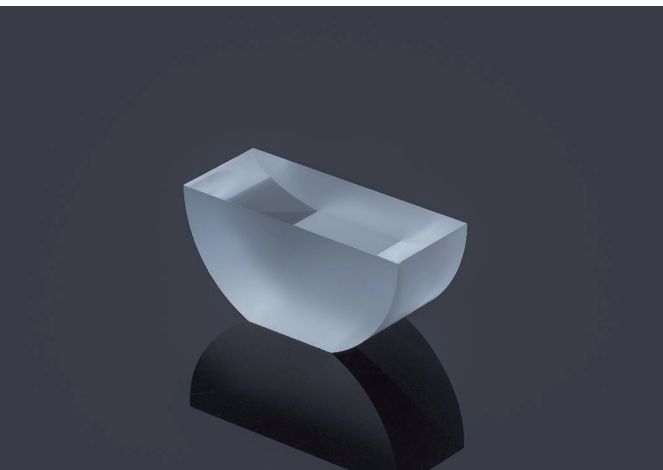
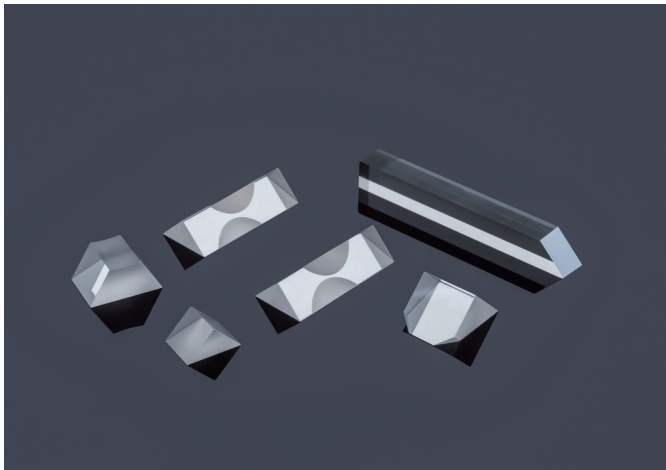
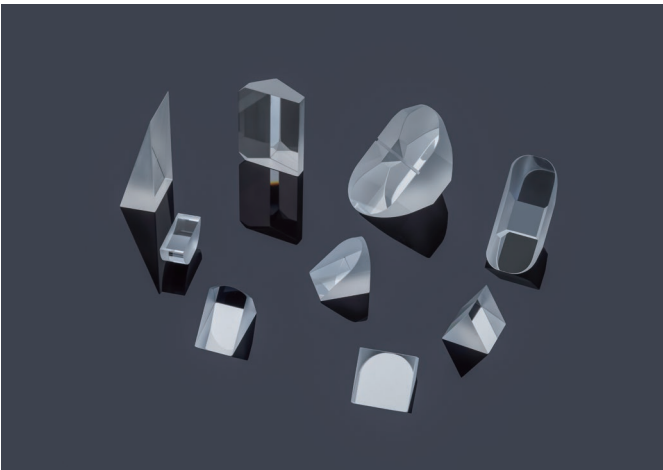
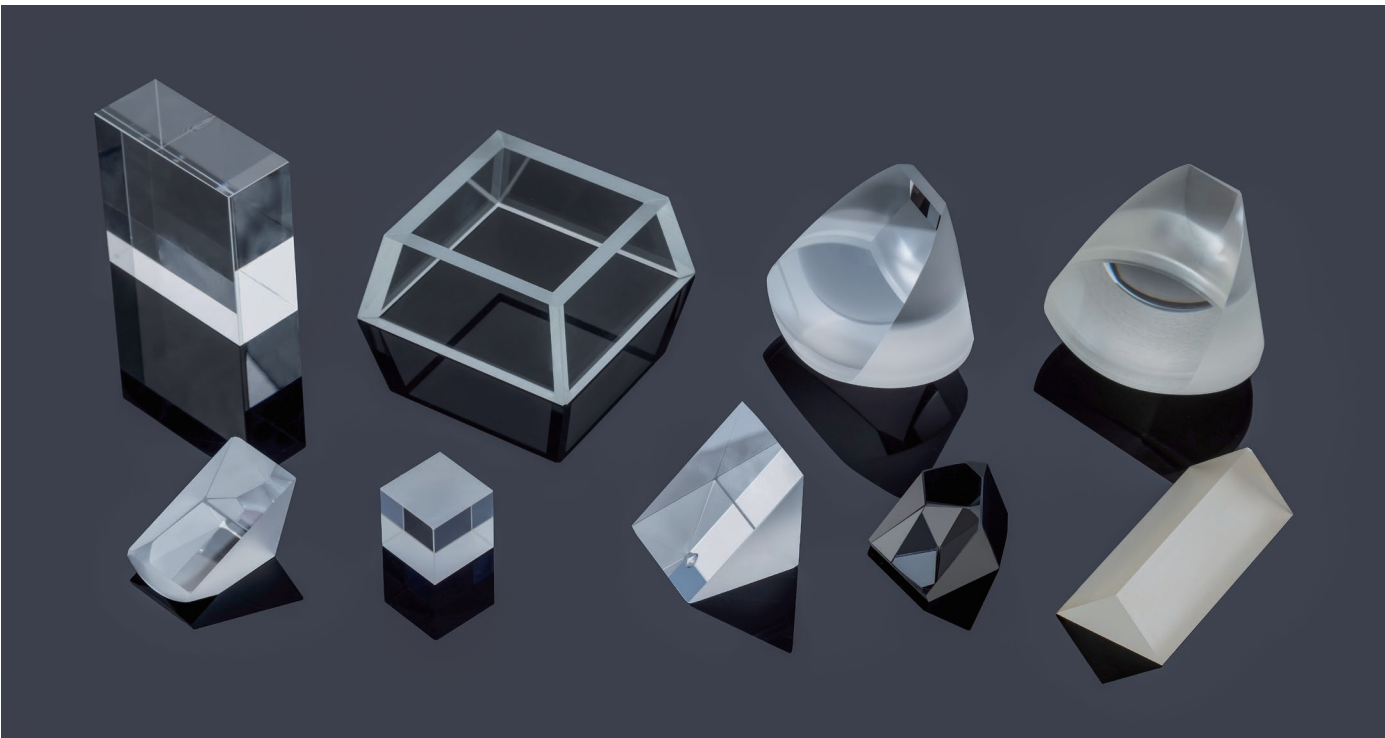
We offer full-category designs for right-angle prisms, pentaprisms, TIR prisms, rhombic prisms, corner cube prisms, etc. With edge lengths ranging from 5mm to 300mm, we support customization of non-standard angles and composite prisms, enabling core functions such as optical path deflection, beam splitting, and polarization. These play a critical role in optical instruments, laser equipment, and other fields.

Application areas: Projectors, projection machines, periscopes, telescopes, microscopes, fingerprint devices, levels, solar energy converters, measuring instruments, optical equipment, medical instruments, laser treatment equipment, etc.

技术参数

Common Specifications

外径/Diameter	2-200mm
形状/Shape	直角，道威，角锥，屋脊，保罗，立方体，导光棒/ Custom shapes including right angle, Dove, corner cube, roof, Porro, cube, light guide rod, etc.
材料/Substrate Material	玻璃，石英，硅等/Glass, Quartz, Si
平面面型/Surface Flatness	$\lambda/10$ @633nm
角度公差/Dimensional Tolerance	± 2 arcsec
表面质量/Surface Quality	10/5
厚度公差/Thickness Tolerance	± 0.01 mm
尺寸公差/Diameter Tolerance	± 0.01 mm
通光口径/Clear Aperture	90% - 100%
镀膜/Coating	增透，分束，滤光，反射，防水，防雾，导电膜 AR, BBAR, As, AF, ITO; Splitter, Filter, Reflector



○ 一站式光学元件服务商

One-Stop Optical Component Service Provider

○ 镀膜专家

Coating Specialist

👤 徐俊杰 Jason Xu

📞 +86 136 7510 5725

🌐 www.apksoptics.com

📍 江苏省句容市空港大道9号第一工业园2-1
Building 2-1, First Industrial Park, No. 9 Konggang
Avenue, Jurong City, Jiangsu Province, China

